



MELHOR
QUALIDADE
SWEAT



PST
Perfect
sweat
Technology
QUALITY

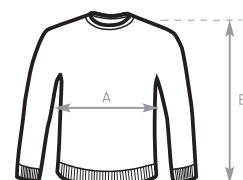
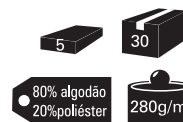


WK680C SWEAT B&C SET IN KIDS

3/4-5/6-7/8-9/11-12/14

WK680W

Sweatshirt de criança de alta qualidade.
PST / Perfect Sweat Technology.
Rib, punhos e cós com elástico.
Toque extra suave.
Excelente para serigrafia.

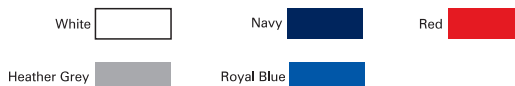


Tamanhos [cm]

	3/4	5/6	7/8	9/11	12/14
A	36	40	43	46	50
B	43	48	53	48	63

(*tamanhos podem variar +/- 5%)

Cores:





WU620
(Pág. 118)

PST
Perfect
sweat
Technology
QUALITY

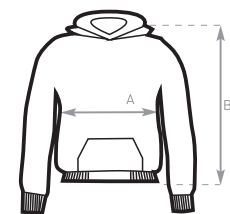
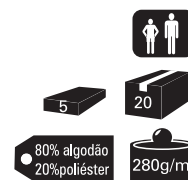


**MELHOR
QUALIDADE
SWEAT**



WK681 SWEAT B&C HOODED KIDS 3/4-5/6-7/8-9/11-12/14

Sweatshirt de criança com capuz duplo.
PST / Perfect Sweat Technology.
Punhos e cós com elastano.
Toque extra suave.

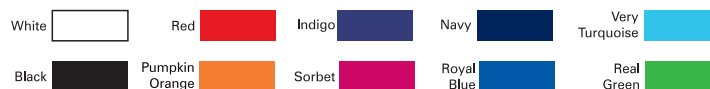


Tamanhos [cm]

	3/4	5/6	7/8	9/11	12/14
A	37	40	43	46	50
B	43	48	53	48	63

(* tamanhos podem variar +/- 5%)

Cores:





WM647
(Pág. 115)

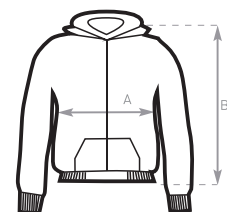
WW642
(Pág. 122)



WK682 SWEAT B&C HOODED FULL ZIP KIDS

3/4-5/6-7/8-9/11-12/14

Sweat criança com capuz e fecho inteiro.
Punhos e cós com elástico.
Polar escovado no interior.

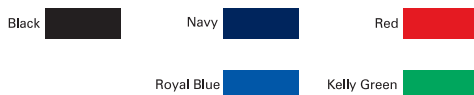


Tamanhos [cm]

	3/4	5/6	7/8	9/11	12/14
A	38	40	43	46	50
B	43	48	53	48	63

(* tamanhos podem variar +/- 5%)

Cores:

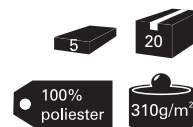




SP511 POLAR SETAS KIDS

3/4-5/6-7/8-9/11-12/14

Polar criança fecho completo.
Resistente ao borboto.
Fecho ao tom.
Sem cordões para maior segurança.
Bolsos laterais.



Tamanhos [cm]

	3/4	5/6	7/8	9/11	12/14
A	36	41	44	48	52
B	44	48	52	57	62

(*tamanhos podem variar +/- 5%)

Cores:

